



FOR LEASE

1050 E 17 STREET

HIALEAH - MIAMI



SUMMARY

FLEX SHOWROOM / OFFICE

SIZE AVAILABLE:

Studio A: 1,200 SF

Studio B: 550 SF

LEASE TYPE:

Modified Gross

SUMMARY

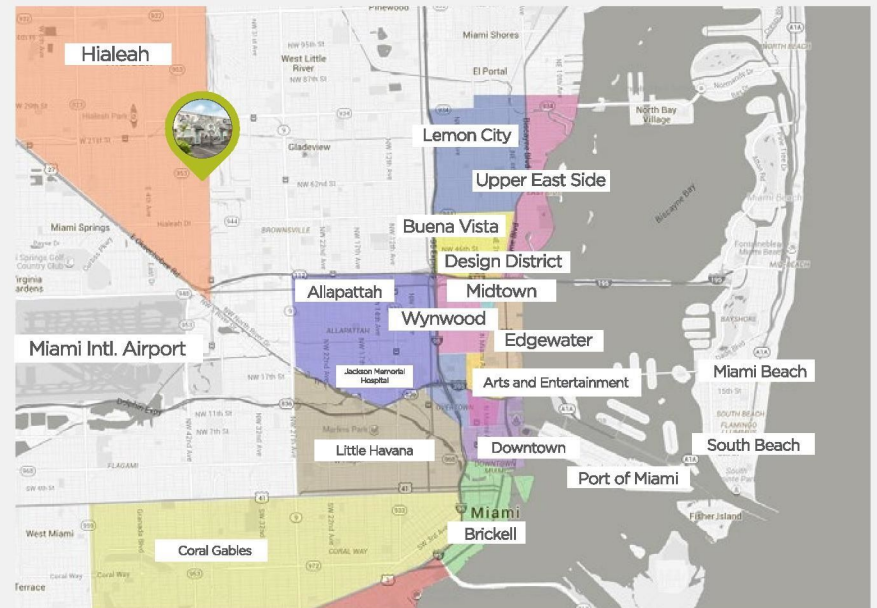
Flex showroom / office loft in the heart of Leah Art District. The spaces feature modern finishes, high ceilings, bathroom, break room, kitchenette and a 120 sf Garden. Includes water electricity, janitorial services for hallway and bathroom

Located in the artist live /work overlay district in Hialeah officially inaugurated by the City of Hialeah in 2015 as “Leah Arts District.”

Less than 25 mins away from Miami’s Urban Core.

DRIVE TIMES

- 📍 Jackson Memorial Hospital 15 Minutes
- 📍 Miami International Airport 16 Minutes
- 📍 Downtown Miami 18 Minutes
- 📍 Brickell 22 Minutes
- 📍 Port of Miami 23 Minutes
- 📍 Tri-Rail Station 5 Minutes
- 📍 Coral Gables 30 Minutes
- 📍 Marlins Park 20 Minutes
- 📍 American Airlines Arena 20 Minutes
- 📍 Miami Beach 30 Minutes
- 📍 FLL International Airport 37 Minutes



1050 E 17 STREET



Alejandro Catusus

ADDRESS:

CONTACT:

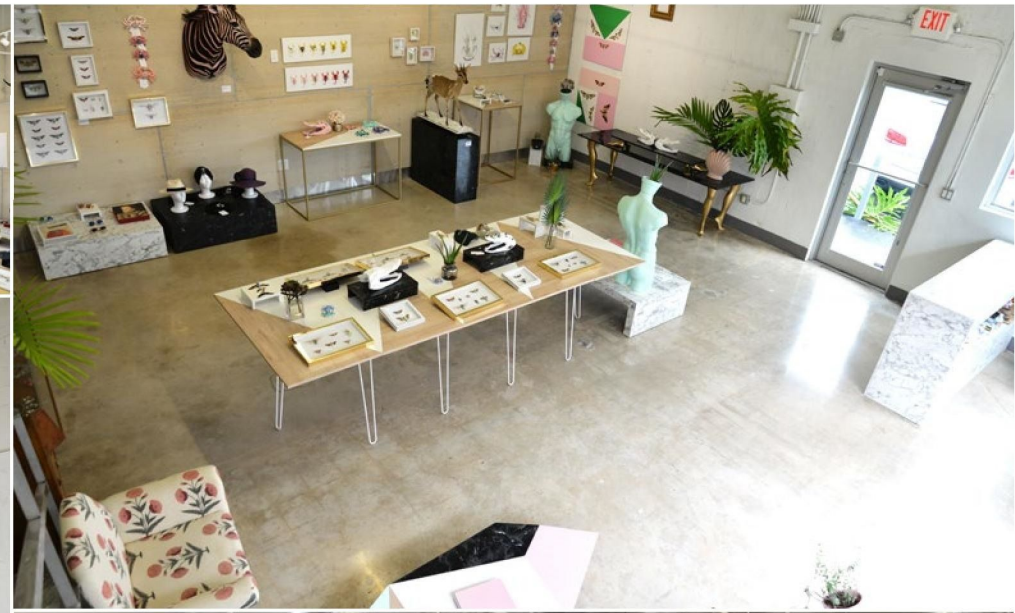
EMAIL:

1050 E 17 STREET

305.562.0132

wc@andeanstone.com

PROCURING BROKER SHALL ONLY BE ENTITLED TO A COMMISSION, CALCULATED IN ACCORDANCE WITH THE RATES APPROVED BY OUR PRINCIPAL ONLY IF SUCH PROCURING BROKER EXECUTES A BROKERAGE AGREEMENT ACCEPTABLE TO US AND OUR PRINCIPAL AND THE CONDITIONS AS SET FORTH IN THE BROKERAGE AGREEMENT ARE FULLY AND UNCONDITIONALLY SATISFIED. ALTHOUGH ALL INFORMATION FURNISHED REGARDING PROPERTY FOR SALE, RENTAL, OR FINANCING IS FROM SOURCES DEEMED RELIABLE, SUCH INFORMATION HAS NOT BEEN VERIFIED AND NO EXPRESS REPRESENTATION IS MADE NOR IS ANY TO BE IMPLIED AS TO THE ACCURACY THEREOF AND IT IS SUBMITTED SUBJECT TO ERRORS, OMISSIONS, CHANGE OF PRICE, RENTAL OR OTHER CONDITIONS, PRIOR SALE, LEASE OR FINANCING, OR WITHDRAWAL WITHOUT NOTICE AND TO ANY SPECIAL CONDITIONS IMPOSED BY OUR PRINCIPAL.



Studio A: 1,200 SF



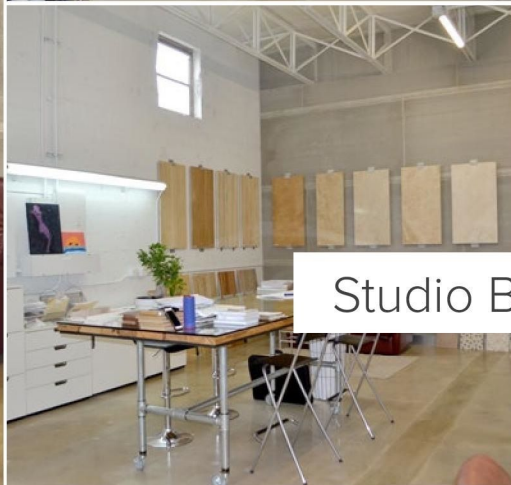
1050 E
17 STREET



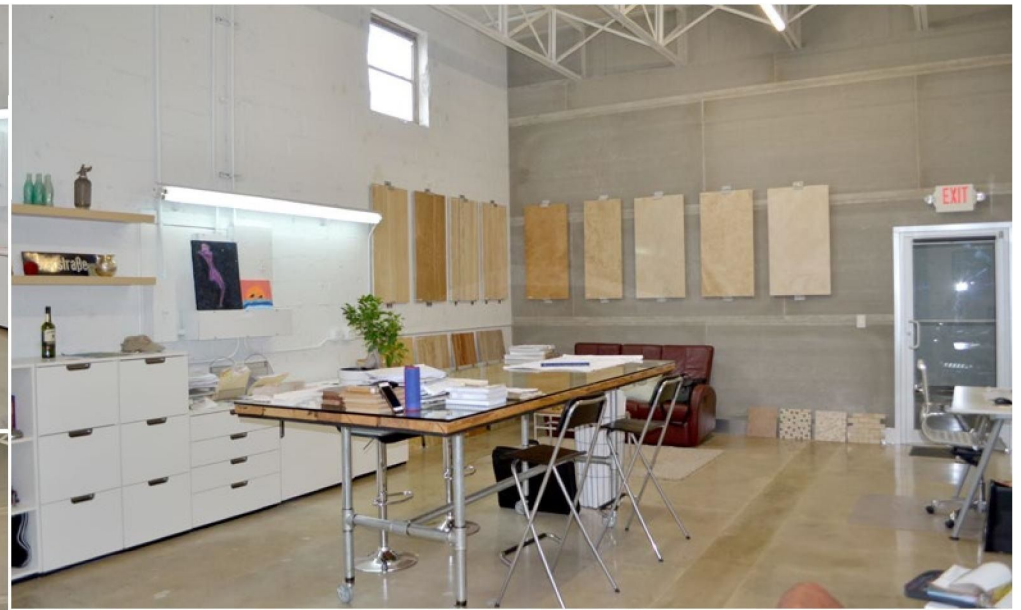
Alejandro Catusus

ADDRESS: 1050 E 17 STREET | CONTACT: 305.562.0132 | EMAIL: wc@andeanstone.com

PROCURING BROKER SHALL ONLY BE ENTITLED TO A COMMISSION, CALCULATED IN ACCORDANCE WITH THE RATES APPROVED BY OUR PRINCIPAL ONLY IF SUCH PROCURING BROKER EXECUTES A BROKERAGE AGREEMENT ACCEPTABLE TO US AND OUR PRINCIPAL AND THE CONDITIONS AS SET FORTH IN THE BROKERAGE AGREEMENT ARE FULLY AND UNCONDITIONALLY SATISFIED. ALTHOUGH ALL INFORMATION FURNISHED REGARDING PROPERTY FOR SALE, RENTAL, OR FINANCING IS FROM SOURCES DEEMED RELIABLE, SUCH INFORMATION HAS NOT BEEN VERIFIED AND NO EXPRESS REPRESENTATION IS MADE NOR IS ANY TO BE IMPLIED AS TO THE ACCURACY THEREOF AND IT IS SUBMITTED SUBJECT TO ERRORS, OMISSIONS, CHANGE OF PRICE, RENTAL OR OTHER CONDITIONS, PRIOR SALE, LEASE OR FINANCING, OR WITHDRAWAL WITHOUT NOTICE AND TO ANY SPECIAL CONDITIONS IMPOSED BY OUR PRINCIPAL.



Studio B: 550 SF



**1050 E
17 STREET**



Alejandro Catusus

ADDRESS:

1050 E 17 STREET

CONTACT:

305.562.0132

EMAIL:

wc@andeanstone.com

PROCURING BROKER SHALL ONLY BE ENTITLED TO A COMMISSION, CALCULATED IN ACCORDANCE WITH THE RATES APPROVED BY OUR PRINCIPAL ONLY IF SUCH PROCURING BROKER EXECUTES A BROKERAGE AGREEMENT ACCEPTABLE TO US AND OUR PRINCIPAL AND THE CONDITIONS AS SET FORTH IN THE BROKERAGE AGREEMENT ARE FULLY AND UNCONDITIONALLY SATISFIED. ALTHOUGH ALL INFORMATION FURNISHED REGARDING PROPERTY FOR SALE, RENTAL, OR FINANCING IS FROM SOURCES DEEMED RELIABLE, SUCH INFORMATION HAS NOT BEEN VERIFIED AND NO EXPRESS REPRESENTATION IS MADE NOR IS ANY TO BE IMPLIED AS TO THE ACCURACY THEREOF AND IT IS SUBMITTED SUBJECT TO ERRORS, OMISSIONS, CHANGE OF PRICE, RENTAL OR OTHER CONDITIONS, PRIOR SALE, LEASE OR FINANCING, OR WITHDRAWAL WITHOUT NOTICE AND TO ANY SPECIAL CONDITIONS IMPOSED BY OUR PRINCIPAL.

LEAH ARTS DISTRICT

Part of Hialeah's South Eastern industrial corridor, The area rose to prominence during the 1980s as one of the largest and busiest areas of production and manufacturing in Florida.

The Leah Arts District enjoys a strategic proximity to the newly proposed Hialeah Market Station development project, Miami's artistic hubs, and other destination areas within Miami-Dade County.

Because of it's location and highly affordable price per square footage, The Leah Arts District is in a position to play a vital and important role in the artistic and cultural development of not only Hialeah, but the entire South Florida community.



IN THE PRESS



"HIALEAH INAUGURATES LEAH ARTS DISTRICT"



"12 NEIGHBORHOODS ACROSS AMERICA THAT ARE ABOUT TO BLOW UP"



"ENTRA EN ACCIÓN EL LEAH, DISTRITO DE ARTE DE HIALEAH"



"HIALEAH ARTIST MARYJANE CLAVEROL TURNS TAXIDERMIED CRITTERS INTO BEJWELED MASTERPIECES"



**1050 E
17 STREET**



Alejandro Catusus

ADDRESS:

1050 E 17 STREET

CONTACT:

305.562.0132

EMAIL:

wc@andeanstone.com

PROCURING BROKER SHALL ONLY BE ENTITLED TO A COMMISSION, CALCULATED IN ACCORDANCE WITH THE RATES APPROVED BY OUR PRINCIPAL ONLY IF SUCH PROCURING BROKER EXECUTES A BROKERAGE AGREEMENT ACCEPTABLE TO US AND OUR PRINCIPAL AND THE CONDITIONS AS SET FORTH IN THE BROKERAGE AGREEMENT ARE FULLY AND UNCONDITIONALLY SATISFIED. ALTHOUGH ALL INFORMATION FURNISHED REGARDING PROPERTY FOR SALE, RENTAL, OR FINANCING IS FROM SOURCES DEEMED RELIABLE, SUCH INFORMATION HAS NOT BEEN VERIFIED AND NO EXPRESS REPRESENTATION IS MADE NOR IS ANY TO BE IMPLIED AS TO THE ACCURACY THEREOF AND IT IS SUBMITTED SUBJECT TO ERRORS, OMISSIONS, CHANGE OF PRICE, RENTAL OR OTHER CONDITIONS, PRIOR SALE, LEASE OR FINANCING, OR WITHDRAWAL WITHOUT NOTICE AND TO ANY SPECIAL CONDITIONS IMPOSED BY OUR PRINCIPAL.



FOR LEASE

1050 E 17 STREET



**1050 E
17 STREET**



Alejandro Catusus

ADDRESS:

1050 E 17 STREET

CONTACT:

305.562.0132

EMAIL:

wc@andeanstone.com

PROCURING BROKER SHALL ONLY BE ENTITLED TO A COMMISSION, CALCULATED IN ACCORDANCE WITH THE RATES APPROVED BY OUR PRINCIPAL ONLY IF SUCH PROCURING BROKER EXECUTES A BROKERAGE AGREEMENT ACCEPTABLE TO US AND OUR PRINCIPAL AND THE CONDITIONS AS SET FORTH IN THE BROKERAGE AGREEMENT ARE FULLY AND UNCONDITIONALLY SATISFIED. ALTHOUGH ALL INFORMATION FURNISHED REGARDING PROPERTY FOR SALE, RENTAL, OR FINANCING IS FROM SOURCES DEEMED RELIABLE, SUCH INFORMATION HAS NOT BEEN VERIFIED AND NO EXPRESS REPRESENTATION IS MADE NOR IS ANY TO BE IMPLIED AS TO THE ACCURACY THEREOF AND IT IS SUBMITTED SUBJECT TO ERRORS, OMISSIONS, CHANGE OF PRICE, RENTAL OR OTHER CONDITIONS, PRIOR SALE, LEASE OR FINANCING, OR WITHDRAWAL WITHOUT NOTICE AND TO ANY SPECIAL CONDITIONS IMPOSED BY OUR PRINCIPAL.